

STORM WATER POLLUTION PREVENTION

SPILL PREVENTION AND CONTROL

AMERICAN FORK CITY
PUBLIC WORKS DEPARTMENT

MS₄ PERMIT

Permit No.: UTR000000

STATE OF UTAH
DEPARTMENT OF ENVIRONMENTAL QUALITY
DIVISION OF WATER QUALITY
SALT LAKE CITY, UTAH 84114-4870

Authorization to Discharge Under the
Utah Pollutant Discharge Elimination System

Multi-Sector General Permit (MSGP) for Storm Water
Discharges Associated with Industrial Activities

GROUP 1

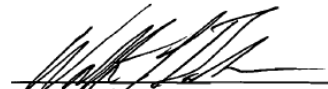
Sector P. Storm Water Discharges Associated With Industrial Activity From Motor Freight Transportation Facilities, Passenger Transportation Facilities, Petroleum Bulk Oil Stations and Terminals, the United States Postal Service, or Railroad Transportation Facilities.

In compliance with the provisions of the *Utah Water Pollution Control Act, Title 19, Chapter 5, Utah Code Annotated 1953*, as amended, the *Act*, the facility identified in the Notice of Intent, is authorized to discharge industrial storm water from the specified industrial site to waters of the State, as identified in the Notice of Intent, in accordance with discharge point(s), effluent limitations, monitoring requirements, and other conditions set forth herein.

This permit shall become effective on February 01, 2009.

This permit and the authorization to discharge shall expire at midnight, December 31, 2013.

Signed this 28th day of January, 2009.

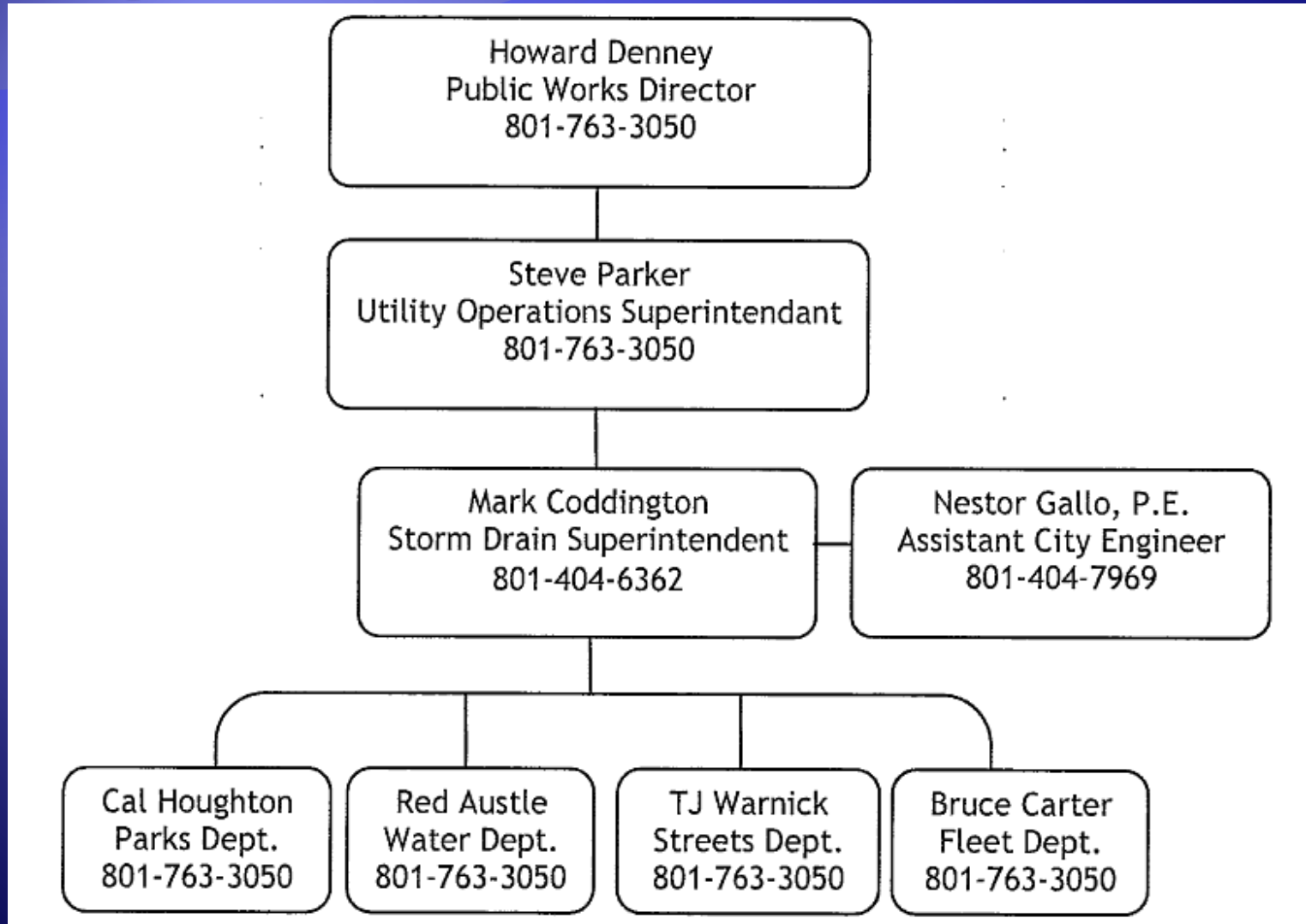


Walter L. Baker, P.E.
Executive Secretary
Utah Water Quality Board

MS₄ PERMIT

- ◆ "STORM WATER DISCHARGES ASSOCIATED WITH INDUSTRIAL ACTIVITIES FROM:
 - ◆ **MOTOR FREIGHT FACILITIES**
 - ◆ **PASSENGER TRANSPORTATION FACILITIES**
 - ◆ **PETROLEUM BULK OIL STATION AND TERMINALS**

MS4 – ORGANIZATIONAL CHART



SPILL RESPONSE AND CONTROL

- ◆ IDENTIFYING WASTE MATERIALS
- ◆ MATERIALS INVENTORY
- ◆ SPILL PREVENTION
- ◆ SPILL CONTROL
- ◆ SPILL RESPONSE
- ◆ FILING A REPORT
- ◆ PUBLIC WORKS DRAINAGE SYSTEM

IDENTIFYING WASTE MATERIALS

WASTE MATERIALS

1. RECYCLE



2. TRASH/ LANDFILLS



3. HAZARDOUS WASTE



IDENTIFYING WASTE MATERIALS

RECYCLABLE MATERIALS



1. ALUMINUM , STEEL
2. CARD BOARD/ PAPER
3. CAR OIL
4. PLASTIC

IDENTIFYING WASTE MATERIALS

TRASH – LAND FILL

1. GARBAGE
2. REFUSE
3. NON-CORROSIVE



IDENTIFYING WASTE MATERIALS

HAZARDOUS WASTE

1. TOXIC CHEMICALS
2. TOXIC EMISSIONS
3. BIOLOGIC WASTE
4. RADIOACTIVE WASTE



IDENTIFYING WASTE MATERIALS

KNOW THE CHARACTERISTICS:

1. **IGNITABLE:** example: diesel, fuel, etc.
2. **CORROSIVE:** cement, pesticides, etc.
3. **REACTIVE:** reaction with water, heat, etc.
4. **TOXIC**

IDENTIFYING WASTE MATERIALS

HAZARDOUS WASTE CONTAINERS:

1. LABELED PROPERLY
2. KEPT CLOSED
3. LOCATED ON IMPERVIOUS SURFACE
4. PROTECTED FROM THE WATER

SPILL PREVENTION

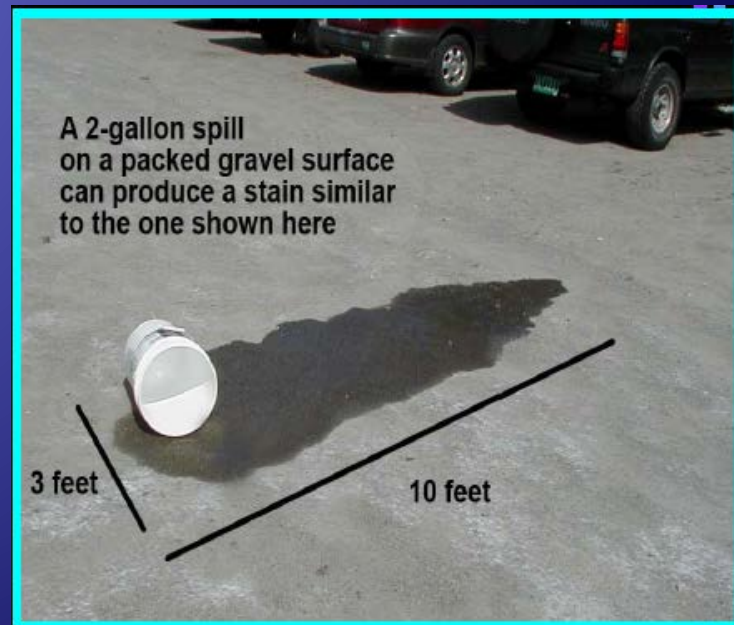
THE PROBLEM:

1. OCCUR MOST OFTEN IN WINTER
2. DURING LOADING AND UNLOADING
3. NON-EMERGENCY SPILLS
4. EMERGENCY SPILLS

SPILL PREVENTION

REPORTING SPILLS: WHEN?

1. IMMEDIATELY – IF:
 - A. 2-gallons or more of oil / pollutants
 - B. Any amount of other chemicals



SPILL PREVENTION

REPORTING SPILLS: FLOOR DRAINS?

Floor drains from areas where vehicles are serviced or where hazardous materials are stored **MUST** drain to:

1. Sanitary Sewer System
2. A holding tank for proper disposal



NON – EMERGENCY SPILLS

NON-HAZARDOUS MATERIALS



1. STOP THE SOURCE OF THE SPILL
2. PLUG STORM DRAINS
3. PLUG FLOOR DRAINS
4. CONTAIN ANY SPILLED MATERIALS
5. CLEAN UP THE SPILL
6. FILL OUT SPILL REPORT

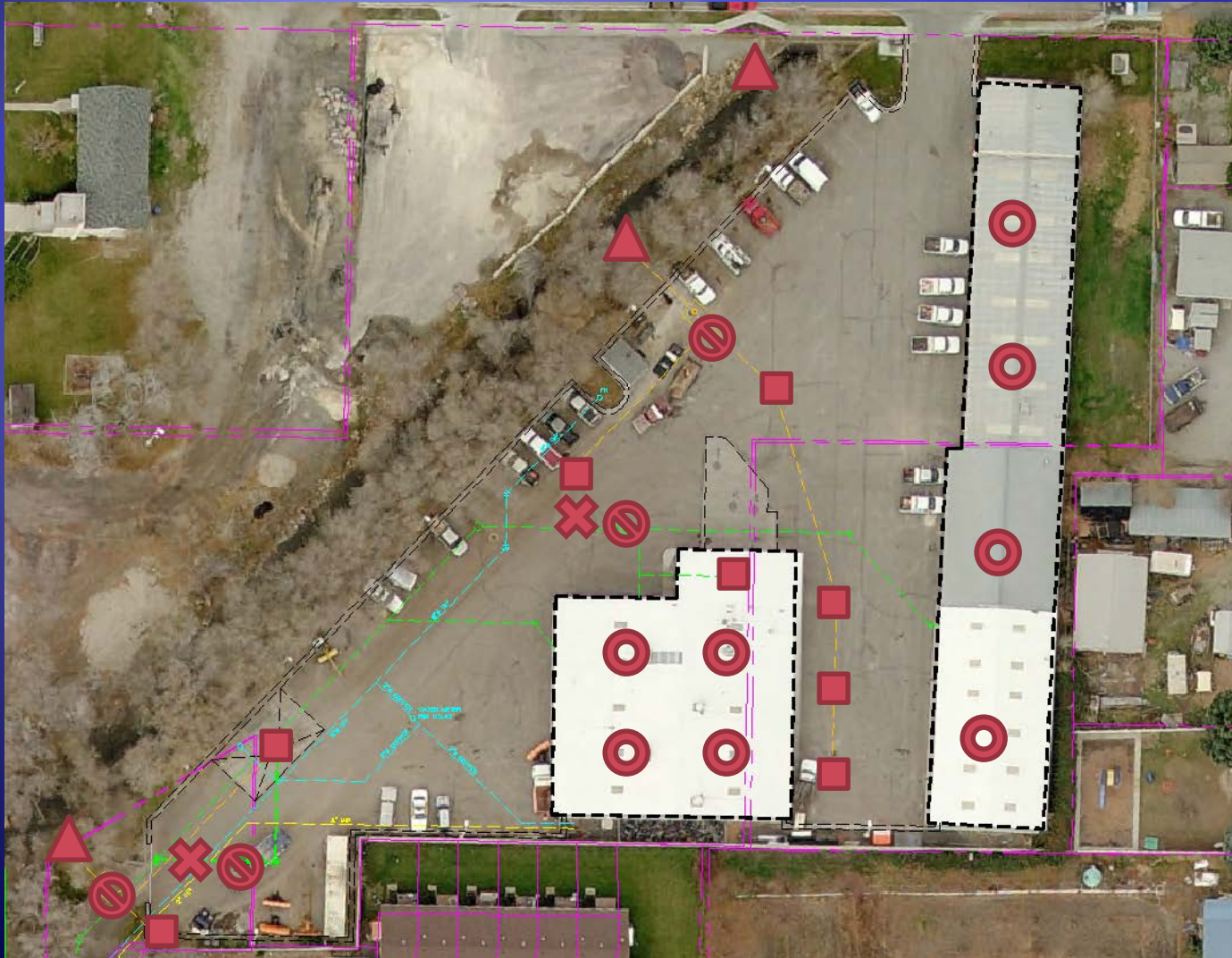
EMERGENCY SPILLS

HAZARDOUS MATERIALS



1. CALL 911
2. CONTACT STORMWATER MANAGER
3. CONTACT PUBLIC WORKS DIRECTOR
4. CONTACT AF CITY FIRE DEPARTMENT
5. UTAH COUNTY HEALTH DEPARTMENT
6. PERSONAL PROTECTIVE EQUIPMENT

PUBLIC WORKS DRAINAGE SYSTEM



Outfalls

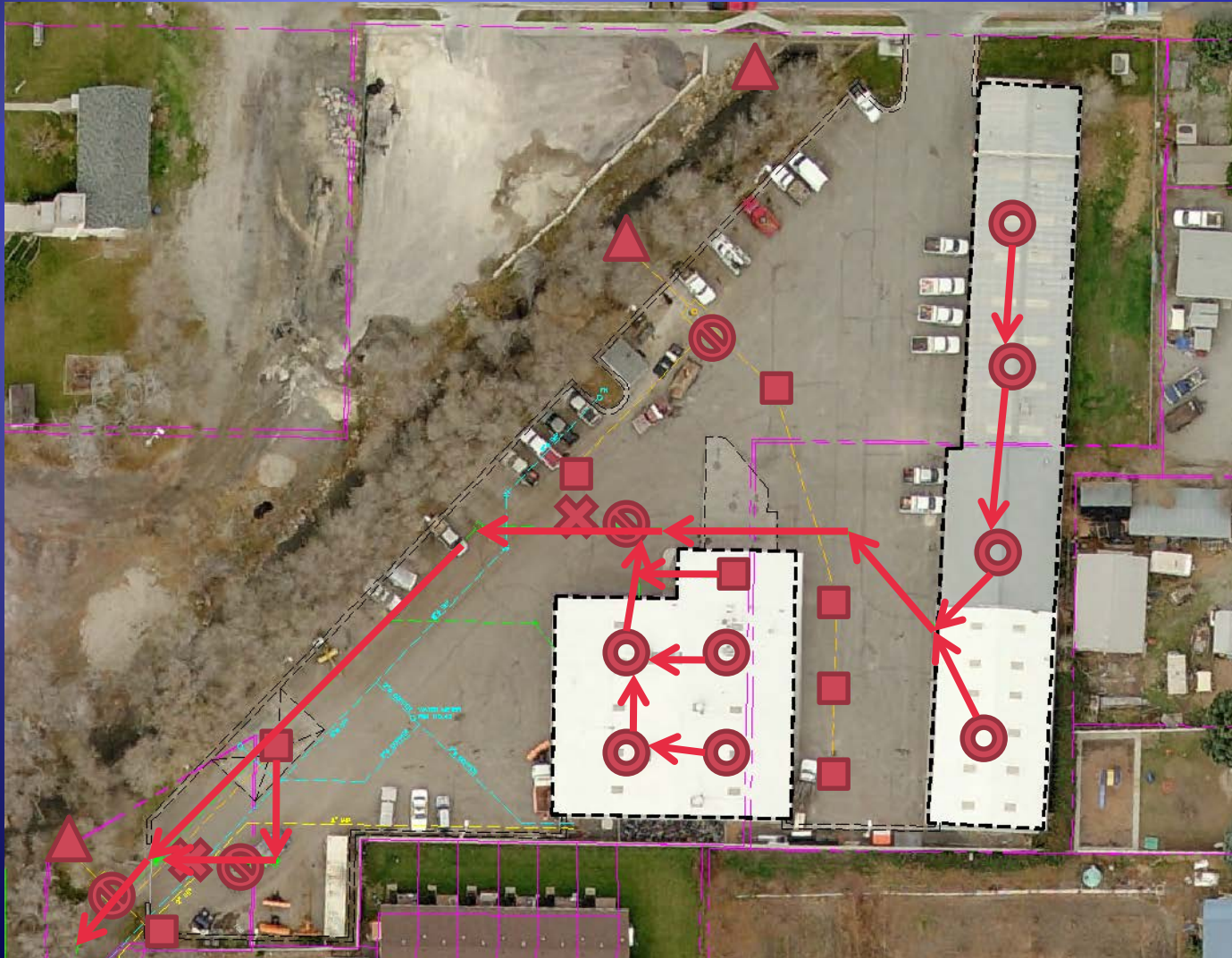
O/W sep.

Sample MH

Catch basin

Floor drain

PUBLIC WORKS DRAINAGE SYSTEM



Outfalls

O/W sep.

Sample MH

Catch basin

Floor drain

EMERGENCY SPILLS

HAZARDOUS MATERIALS

Chemical Spills Leaks and Clean Up Operations from SafetyInstruction.com.rv

QUESTIONS?

THANK YOU FOR ALL YOUR HELP!